

Technical Analysis Report

| KSE 100 Index | | | |
|---------------|------------|------------|------------|
| Support | | Resistance | |
| S1 | 110,240.90 | R1 | 114,500.04 |
| S2 | 109,488.40 | R2 | 115,200.04 |
| S3 | 108,500.01 | R3 | 116,000.03 |

| Indicator | Reading |
|-----------------------|---------|
| 14 – Day RSI | 45 |
| Stochastic Oscillator | 28 |

| Moving AVG | Reading |
|------------|------------|
| 20 – DMA | 115,343.49 |
| 50 – DMA | 114,876.68 |
| 100 – DMA | 111,113.21 |
| 200 – DMA | 101,596.91 |

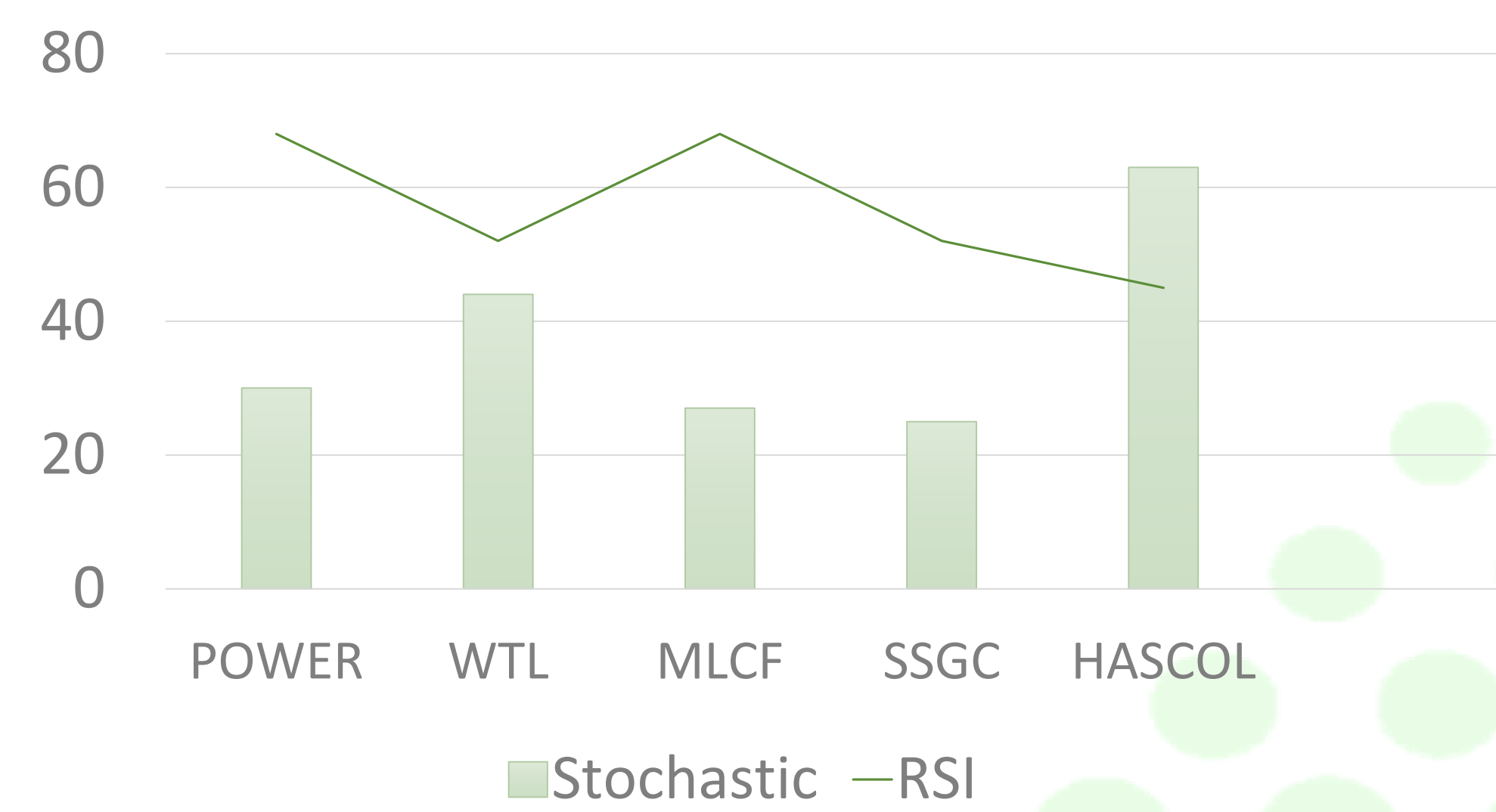
| Market at a Glance | | | |
|--------------------|------------|--------|-------------|
| Open | 114,267.40 | Close | 114,102.23 |
| High | 114,552.20 | Change | (-0.01%) |
| Low | 113,077.66 | Volume | 153,678,242 |



Strategy:

KSE-100 INDEX : Recovers losses, KSE-100 up over 200 points After shedding over 1,000 points in early trading, the benchmark KSE-100 Index recovered all losses during the ongoing session on Monday. Selling pressure was witnessed for most of the day at the Pakistan Stock Exchange (PSX) as investor sentiment remained cautious due to escalating tensions between Pakistan and India, dragging the index to an intra-day low of 113,077.66. However, the market staged a strong recovery in the latter half, and by 2:20pm, the benchmark index had rebounded to 114,350.45 — up by 236.52 points or 0.21%.

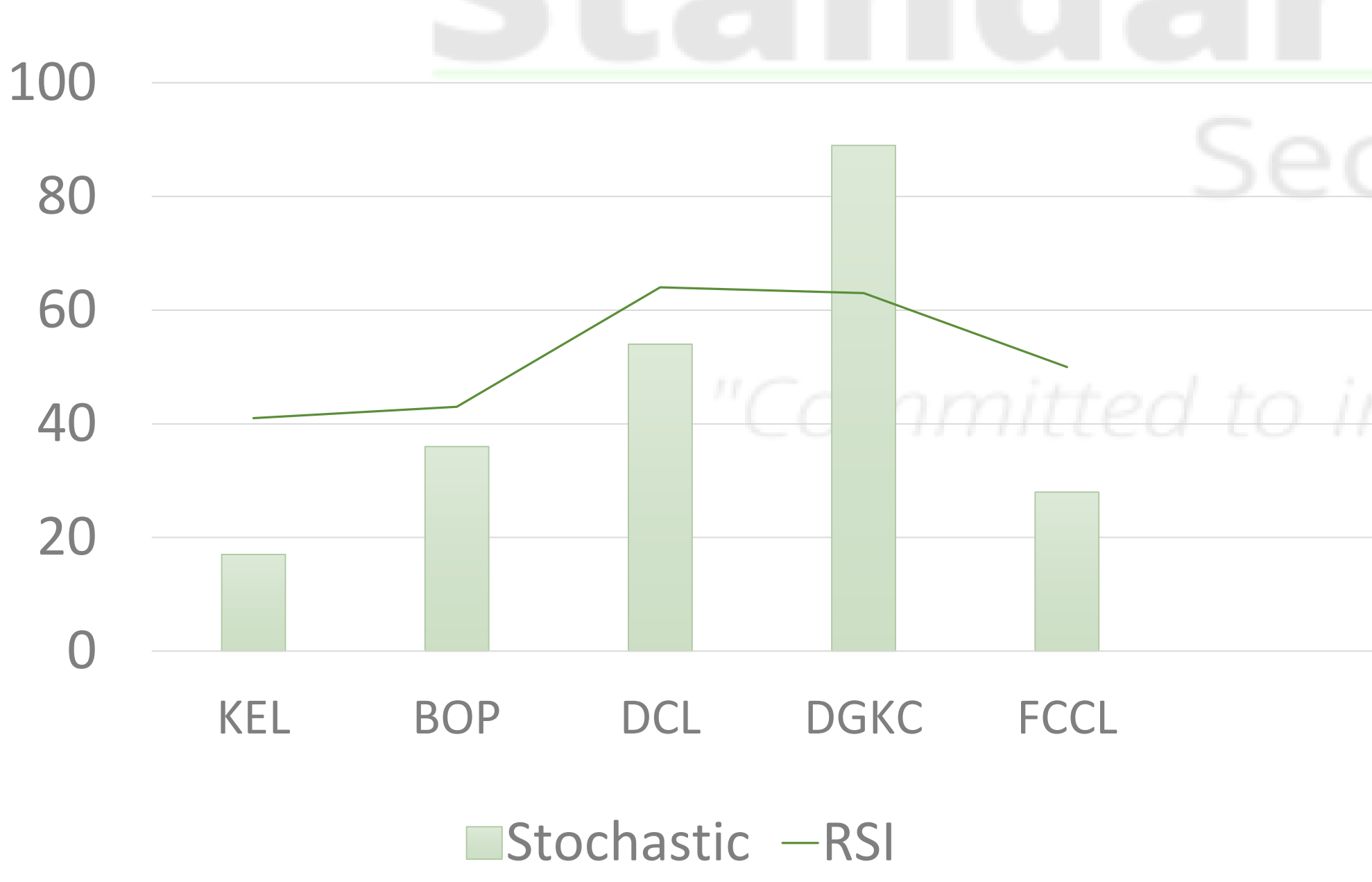
RSI and Stochastic Indicators



Volume Leaders

| Symbol | Close | Change | Volume |
|--------|-------|----------------|------------|
| POWER | 14.77 | 0.84 (6.03%) | 41,240,095 |
| WTL | 1.34 | 0.07 (5.51%) | 23,834,644 |
| MLCF | 71.74 | 2.30 (3.31%) | 23,478,673 |
| SSGC | 39.98 | -0.27 (-0.67%) | 23,107,562 |
| HASCOL | 10.5 | 0.52 (5.21%) | 20,164,318 |
| KEL | 4.15 | 0.13 (3.23%) | 17,630,980 |
| BOP | 10.01 | 0.32 (3.30%) | 17,020,462 |
| DCL | 10.81 | 0.64 (6.29%) | 16,027,774 |
| DGKC | 138.7 | 5.91 (4.45%) | 14,629,173 |
| FCCL | 44.78 | 1.34 (3.09%) | 14,580,224 |

RSI and Stochastic Indicators



Standard Capital Securities | Technical Desk

UAN: 021-111-111-721

info@scstrade.com

WWW.SCSTRADE.COM

Most Active in Market

| SYMBOL | COMPANY NAME | CLOSE | MACD DAILY | MACD WEEKLY | RSI DAILY | SUP 1 | SUP 2 | RES 1 | RES 2 | SMA 60 | SMA 200 | 52 WK HIGH | 52 WK LOW |
|--------|-----------------------------|--------|------------|-------------|-----------|--------|--------|--------|--------|----------|----------|------------|-----------|
| ATRL | Attock Refinery Ltd. ... | 530.54 | Sell | Sell | 28.46 | 523.67 | 516.81 | 536.05 | 541.57 | 618.19 | 509.03 | 775.75 | 293.50 |
| DGKC | D. G. Khan Cement Co... | 132.79 | Buy | Buy | 58.00 | 128.59 | 124.40 | 135.59 | 138.40 | 122.42 | 98.40 | 136.90 | 73.00 |
| LUCK | Lucky Cement Ltd. Con... | 336.80 | Sell | Sell | 14.93 | 332.53 | 328.27 | 341.53 | 346.27 | 1,347.69 | 1,079.85 | 1,796.00 | 325.00 |
| NRL | National Refinery Ltd. ... | 208.71 | Sell | Sell | 33.75 | 203.15 | 197.58 | 212.14 | 215.56 | 245.25 | 243.60 | 341.50 | 196.00 |
| OGDC | Oil & Gas Development... | 203.25 | Sell | Sell | 38.08 | 202.17 | 201.10 | 204.40 | 205.56 | 213.03 | 185.04 | 255.40 | 118.31 |
| POL | Pakistan Oilfields Ltd. ... | 514.24 | Sell | Sell | 35.32 | 508.70 | 503.16 | 521.89 | 529.54 | 557.31 | 586.30 | 699.00 | 445.52 |
| PPL | Pakistan Petroleum Ltd. | 150.83 | Sell | Sell | 27.08 | 148.98 | 147.13 | 152.85 | 154.87 | 175.84 | 154.02 | 216.50 | 106.40 |
| PSO | Pakistan State Oil Com... | 353.00 | Sell | Sell | 38.55 | 348.45 | 343.89 | 357.11 | 361.21 | 372.12 | 286.13 | 465.00 | 154.20 |
| SNGP | Sui Northern Gas Pipeli... | 125.47 | Buy | Buy | 63.09 | 123.19 | 120.91 | 129.31 | 133.15 | 104.87 | 87.88 | 130.87 | 60.50 |
| SSGC | Sui Southern Gas Com... | 40.25 | Sell | Sell | 53.21 | 38.57 | 36.90 | 41.46 | 42.68 | 36.62 | 25.62 | 50.87 | 8.31 |
| TRG | TRG Pakistan Ltd. | 64.05 | Sell | Sell | 48.72 | 63.30 | 62.55 | 65.15 | 66.25 | 63.83 | 58.60 | 75.00 | 44.03 |

Today's AI Generated Signal

FFC - Fauji Fertilizer Company Ltd. Consolidated

Signal: Buy

Signal Rate: 356.41

Next Signal: (Stop Loss) / Sell When Price Closes Below 350

HBL - Habib Bank Ltd.

Signal: Sell

Signal Rate: 147.38

Next Signal: Buy When Price Closes Above 150

HCAR - Honda Atlas Cars (Pakistan) Ltd.

Signal: Buy

Signal Rate: 280.64

Next Signal: (Stop Loss) / Sell When Price Closes Below 275.61

ISL - International Steels Ltd.

Signal: Buy

Signal Rate: 72.42

Next Signal: (Stop Loss) / Sell When Price Closes Below 69.01

NETSOL - Netsol Technology Ltd.

Signal: Buy

Signal Rate: 127.1

Next Signal: (Stop Loss) / Sell When Price Closes Below 124.9

PIOC - Pioneer Cement Ltd.

Signal: Buy

Signal Rate: 209.97

Next Signal: (Stop Loss) / Sell When Price Closes Below 195.11

PSO - Pakistan State Oil Company Ltd. Consolidated

Signal: Buy

Signal Rate: 355.84

Next Signal: (Stop Loss) / Sell When Price Closes Below 347.05

SAZEW - Sazgar Engineering Works Ltd.

Signal: Buy

Signal Rate: 1343.15

Next Signal: (Stop Loss) / Sell When Price Closes Below 1298

SNGP - Sui Northern Gas Pipelines Ltd.

Signal: Sell

Signal Rate: 124.13

Next Signal: Buy When Price Closes Above 125.89

Standard Capital
Securities (PVT) LTD

"Committed to intelligent investing"

AI Generated Open Positions (All)

AGP - AGP Ltd.

Current Signal State: Sell

Signal Initiated At: 186.05

Signal Initiated On: 30-Apr-25

Current Rate: 175.98

Next Signal: Buy When Price Closes Above 185

AIRLINK - Air Link Communication Ltd

Current Signal State: Sell

Signal Initiated At: 168.51

Signal Initiated On: 24-Apr-25

Current Rate: 156.25

Next Signal: Buy When Price Closes Above 159.99

ASTL - Amreli Steels Ltd.

Current Signal State: Sell

Signal Initiated At: 21

Signal Initiated On: 28-Apr-25

Current Rate: 20.9

Next Signal: Buy When Price Closes Above 21

ATRL - Attock Refinery Ltd.

Current Signal State: Sell

Signal Initiated At: 649.89

Signal Initiated On: 24-Mar-25

Current Rate: 533

Next Signal: Buy When Price Closes Above 541

BAHL - Bank AL-Habib Ltd.

Current Signal State: Sell

Signal Initiated At: 137.95

Signal Initiated On: 24-Apr-25

Current Rate: 137.56

Next Signal: Buy When Price Closes Above 141

CHCC - Cherat Cement Company Ltd.

Current Signal State: Sell

Signal Initiated At: 280.32

Signal Initiated On: 23-Apr-25

Current Rate: 263.11

Next Signal: Buy When Price Closes Above 269

DGKC - D. G. Khan Cement Company Ltd.

Current Signal State: Buy

Signal Initiated At: 127.75

Signal Initiated On: 29-Apr-25

Current Rate: 138.99

Profit / Loss: 8.80%

Next Signal: (Stop Loss) / Sell When Price Closes Below 127.2

EFERT - Engro Fertilizers Ltd.

Current Signal State: Sell

Signal Initiated At: 187.1

Signal Initiated On: 18-Apr-25

Current Rate: 169.99

Next Signal: Buy When Price Closes Above 172.4

ENGRO - Engro Corporation Ltd. Consolidated

Current Signal State: Buy

Signal Initiated At: 435.67

Signal Initiated On: 23-Dec-24

Current Rate: 0

Profit / Loss: -100.00%

Next Signal: (Stop Loss) / Sell When Price Closes Below 474.01

FEROZ - Ferozsons Laboratories Ltd.

Current Signal State: Buy

Signal Initiated At: 276.31

Signal Initiated On: 02-May-25

Current Rate: 277

Profit / Loss: 0.25%

Next Signal: (Stop Loss) / Sell When Price Closes Below 260.2

FFC - Fauji Fertilizer Company Ltd. Consolidated

Current Signal State: Sell

Signal Initiated At: 354.44

Signal Initiated On: 24-Apr-25

Current Rate: 354.9

Next Signal: Buy When Price Closes Above 355.2

GHNI - Ghandhara Industries Ltd.

Current Signal State: Buy

Signal Initiated At: 741.47

Signal Initiated On: 02-May-25

Current Rate: 744.84

Profit / Loss: 0.45%

Next Signal: (Stop Loss) / Sell When Price Closes Below 715.01

GLAXO - Glaxosmithkline (Pak) Ltd.

Current Signal State: Sell

Signal Initiated At: 455.26

Signal Initiated On: 23-Apr-25

Current Rate: 369

Next Signal: Buy When Price Closes Above 379

HBL - Habib Bank Ltd.

Current Signal State: Buy

Signal Initiated At: 153.98

Signal Initiated On: 02-May-25

Current Rate: 147.75

Profit / Loss: -4.05%

Next Signal: (Stop Loss) / Sell When Price Closes Below 148.99

HCAR - Honda Atlas Cars (Pakistan) Ltd.

Current Signal State: Sell

Signal Initiated At: 287.33

Signal Initiated On: 25-Apr-25

Current Rate: 281.83

Next Signal: Buy When Price Closes Above 279.98

INIL - International Industries Ltd. Consolidated

Current Signal State: Sell

Signal Initiated At: 150.9

Signal Initiated On: 07-Apr-25

Current Rate: 142

Next Signal: Buy When Price Closes Above 143.57

ISL - International Steels Ltd.

Current Signal State: Sell

Signal Initiated At: 70.92

Signal Initiated On: 29-Apr-25

Current Rate: 73.5

Next Signal: Buy When Price Closes Above 71.79

LUCK - Lucky Cement Ltd. Consolidated

Current Signal State: Sell

Signal Initiated At: 358.88

Signal Initiated On: 28-Apr-25

Current Rate: 336

Next Signal: Buy When Price Closes Above 343.94

MCB - MCB Bank Ltd.

Current Signal State: Sell

Signal Initiated At: 269.16

Signal Initiated On: 30-Apr-25

Current Rate: 272.67

Next Signal: Buy When Price Closes Above 281.48

MEBL - Meezan Bank Ltd.

Current Signal State: Buy

Signal Initiated At: 279

Signal Initiated On: 21-Apr-25

Current Rate: 270.99

Profit / Loss: -2.87%

Next Signal: (Stop Loss) / Sell When Price Closes Below 256.8

MLCF - Maple Leaf Cement Factory Ltd. Consolidated

Current Signal State: Buy

Signal Initiated At: 64.57

Signal Initiated On: 17-Apr-25

Current Rate: 71.74

Profit / Loss: 11.10%

Next Signal: (Stop Loss) / Sell When Price Closes Below 64.42

MUGHAL - Mughal Iron & Steels Ind. Ltd.

Current Signal State: Sell

Signal Initiated At: 72.5

Signal Initiated On: 24-Mar-25

Current Rate: 64.39

Next Signal: Buy When Price Closes Above 64

NCL - Nishat Chunian Ltd.

Current Signal State: Buy

Signal Initiated At: 35.44

Signal Initiated On: 29-Apr-25

Current Rate: 36.15

Profit / Loss: 2.00%

Next Signal: (Stop Loss) / Sell When Price Closes Below 33.5

NETSOL - Netsol Technology Ltd.

Current Signal State: Sell

Signal Initiated At: 137.14

Signal Initiated On: 16-Apr-25

Current Rate: 126.9

Next Signal: Buy When Price Closes Above 126.36

NML - Nishat Mills Ltd. Consolidated

Current Signal State: Sell

Signal Initiated At: 116.18

Signal Initiated On: 23-Apr-25

Current Rate: 110.1

Next Signal: Buy When Price Closes Above 115.75

NRL - National Refinery Ltd.

Current Signal State: Buy

Signal Initiated At: 208.71

Signal Initiated On: 02-May-25

Current Rate: 207.25

Profit / Loss: -0.70%

Next Signal: (Stop Loss) / Sell When Price Closes Below 201.01

OCTOPUS - Octopus Digital Limited

Current Signal State: Sell

Signal Initiated At: 52.14

Signal Initiated On: 24-Apr-25

Current Rate: 48

Next Signal: Buy When Price Closes Above 50.51

OGDC - Oil & Gas Development Company Ltd.

Current Signal State: Sell

Signal Initiated At: 226.77

Signal Initiated On: 04-Apr-25

Current Rate: 200.68

Next Signal: Buy When Price Closes Above 207

PIOC - Pioneer Cement Ltd.

Current Signal State: Sell

Signal Initiated At: 210.65

Signal Initiated On: 24-Apr-25

Current Rate: 210

Next Signal: Buy When Price Closes Above 204.5

POL - Pakistan Oilfields Ltd.

Current Signal State: Sell

Signal Initiated At: 546.37

Signal Initiated On: 04-Apr-25

Current Rate: 508

Next Signal: Buy When Price Closes Above 546

PPL - Pakistan Petroleum Ltd.

Current Signal State: Sell

Signal Initiated At: 174.79

Signal Initiated On: 07-Apr-25

Current Rate: 148.25

Next Signal: Buy When Price Closes Above 154

PRL - Pakistan Refinery Ltd.

Current Signal State: Buy

Signal Initiated At: 28.91

Signal Initiated On: 02-May-25

Current Rate: 29.45

Profit / Loss: 1.87%

Next Signal: (Stop Loss) / Sell When Price Closes Below 28.19

PSO - Pakistan State Oil Company Ltd. Consolidated

Current Signal State: Sell

Signal Initiated At: 411.26

Signal Initiated On: 04-Apr-25

Current Rate: 358.25

Next Signal: Buy When Price Closes Above 353

SAZEW - Sazgar Engineering Works Ltd.

Current Signal State: Sell

Signal Initiated At: 1263.81

Signal Initiated On: 30-Apr-25

Current Rate: 1347

Next Signal: Buy When Price Closes Above 1304.6

SEARL - The Searle Company Ltd. Consolidated

Current Signal State: Sell

Signal Initiated At: 93.75

Signal Initiated On: 07-Apr-25

Current Rate: 83.69

Next Signal: Buy When Price Closes Above 84.65

SNGP - Sui Northern Gas Pipelines Ltd.

Current Signal State: Buy

Signal Initiated At: 125.97

Signal Initiated On: 29-Apr-25

Current Rate: 124.7

Profit / Loss: -1.01%

Next Signal: (Stop Loss) / Sell When Price Closes Below 124.75

SSGC - Sui Southern Gas Company Ltd.

Current Signal State: Buy

Signal Initiated At: 40.25

Signal Initiated On: 02-May-25

Current Rate: 39.98

Profit / Loss: -0.67%

Next Signal: (Stop Loss) / Sell When Price Closes Below 38.11

SYS - Systems Ltd.

Current Signal State: Buy

Signal Initiated At: 523.19

Signal Initiated On: 28-Apr-25

Current Rate: 523.9

Profit / Loss: 0.14%

Next Signal: (Stop Loss) / Sell When Price Closes Below 511

TRG - TRG Pakistan Ltd.

Current Signal State: Buy

Signal Initiated At: 64.68

Signal Initiated On: 10-Apr-25

Current Rate: 63.66

Profit / Loss: -1.58%

Next Signal: (Stop Loss) / Sell When Price Closes Below 62.32

UBL - United Bank Ltd.

Current Signal State: Buy

Signal Initiated At: 498.06

Signal Initiated On: 02-May-25

Current Rate: 487

Profit / Loss: -2.22%

Next Signal: (Stop Loss) / Sell When Price Closes Below 470

Glossary of Terms

Support: Support is the level at which the stock is likely to see increased interest from buyers. The buying support will prevent the stock from falling further.

Resistance: Resistance is the level at which the stock is likely to see increased interest from sellers. The selling pressure will prevent the stock from rising further.

RSI: The Relative Strength Index (RSI) is a momentum oscillator that ranges from 0 to 100. It compares the extent of the stock's recent price movements by evaluating recent gains and losses. Stocks with RSI above 70 could be considered overbought, and below 30 could be considered oversold. Generally, if the RSI falls below 70, it is a bearish signal. Conversely, if the RSI of a stock rises above 30 it is considered bullish. The RSI used is of 14 days.

Bollinger Bands: A Bollinger Band, developed by famous technical trader John Bollinger, is plotted two standard deviations away from a simple moving average. BB is a highly popular technical analysis technique. Many traders believe the closer the prices move to the upper band, the more overbought the market, and the closer the prices move to the lower band, the more oversold the market.

MACD: MACD shows the relationship between a longer period moving average and a short period Moving average of a stock's price. Generally, the 26-day exponential moving average (EMA) and the 12-day EMA are used to calculate MACD.

EMA: Exponential moving average (EMA) is the weighted average of the prices of a given security where higher weights are given to recent data points. EMA is used to analyze the trend of a stock.

SMA: A simple moving average (SMA) is the average of the closing price of a security for a given period. The parabolic SAR: is a technical indicator used to determine the price direction of an asset, as well as draw attention to when the price direction is changing. Sometimes known as the "stop and reversal system," the parabolic SAR was developed by J. Welles Wilder Jr., creator of the relative strength index (RSI).

Disclaimer Section

This document has been prepared by technical analysts at Standard Capital Securities (SCS). This document does not constitute an offer or solicitation for the purchase or sale of any security. This publication is intended only for distribution to the clients of the Company who are assumed to be reasonably sophisticated investors that understand the risks involved in investing in equity securities. The information contained herein is based upon publicly available data and sources believed to be reliable. While every care was taken to ensure accuracy and objectivity, SCS does not represent that it is accurate or complete and it should not be relied on as such. In particular, the report takes no account of the investment objectives, financial situation and particular needs of investors. The information given in this document is as of the date of this report and there can be no assurance that future results or events will be consistent with this information. This information is subject to change without any prior notice. SCS reserves the right to make modifications and alterations to this statement as may be required from time to time. However, SCS is under no obligation to update or keep the information current. SCS is committed to providing independent and transparent recommendation to its client and would be happy to provide any information in response to specific client queries. Past performance is not necessarily a guide to future performance. This document is provided for assistance only and is not intended to be and must not alone be taken as the basis for any investment decision. The user assumes the entire risk of any use made of this information. Each recipient of this document should make such investigation as it deems necessary to arrive at an independent evaluation of an investment in the securities of companies referred to in this document (including the merits and risks involved), and should consult his or her own advisors to determine the merits and risks of such investment. SCS or any of its affiliates shall not be in any way responsible for any loss or damage that may be arise to any person from any inadvertent error in the information contained in this report.